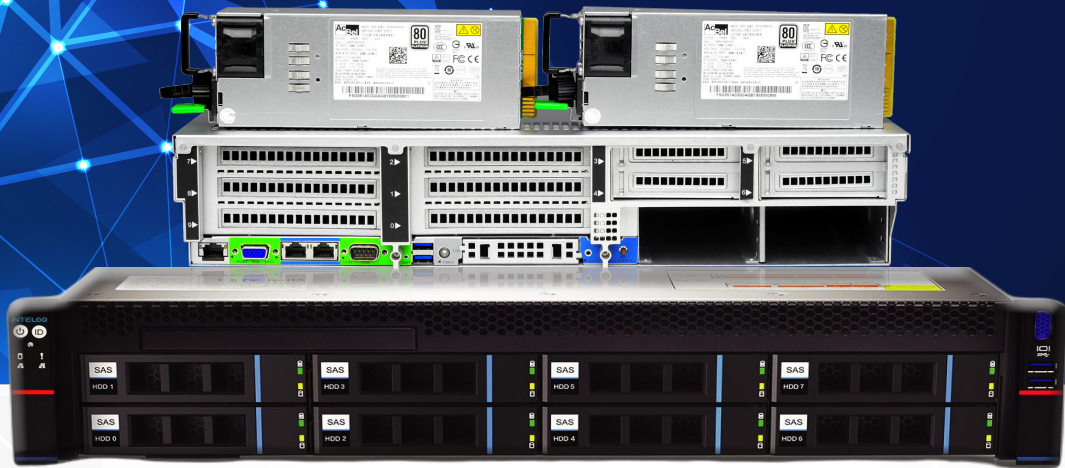


INTELOQ

High-End Intel Purley/ Whitley Servers/Storages for rigorous Surveillance & Analytics applications



General Specs:

Platform: Intel Purley 2U8-Bay rack mountable server

CPU: Intel Xeon Silver 4314/2.4GHz/16C/32T/24MB/2667MHz/135W Single Processor

Riser card: PCIe3.0x24 /4.0x32

Power: 1200W CRPS x2 or as per requirement

Rail: chassis slide rail kits x1

RAID card: Option (as per requirements)

Default NIC card: 1Gb/2ports/RJ45 (Scalable)

RAM: Option

Extra NIC: Options in 1Gig/10Gig/16Gig etc available

OS: Option

* support Front 8x 3.5"/2.5" hot-swap hard drives

* w/2x GbE and 1x IPMI Management LAN

* supports 32x DDR4 RDIMM slots

High-End Server: The Intel Purley Server Platform includes Intel® PCH C621/ C621 A series and supports the 1st or 2nd /Gen3 generation Intel® Xeon® Scalable series processors to bring about servers storages that deliver new levels of breakthrough performance. Supports 1 or 2 Gen3 Intel® Xeon® Scalable ICE Lake processor 32 DDR4 slots, supports 2666/2933/3200MHz RDIMM DDR4 memory

Product Capabilities

Model series	IQ-S4314S8	IQ-SS4314S12	IQ-SS4314S25
Model type	2U, 16-Core 08-bays	2U, 16-Core 12-bays	2U, 16-Core 25-bays
Dimensions	748x433.4x87.6mm (DxWxH)		
Processor	Intel Xeon Silver 4314/2.4GHz/16C/32T/24MB/2667MHz/135W Single Processor		
Memory	32 DDR4 memory slots, support DDR4 LRDIMM/RDIMM 2666/2933 DDR4		
Internal storage interface	3 Minis SAS HD interfaces, 2 SATA DOM interfaces, 2 NVMe PCIe 4.0 M.2 interfaces (size 2280)		
External Hard Drives	Front 8 hot-swap 3.5/2.5inch SAS/SATA/NVMe hard drives; Rear optional up to 2x 2x3.5inch hard drive modules or 2x 2x2.5inch hard drive modules	Front 12 hot-swap 3.5/2.5inch SAS/SATA/NVMe drives; Rear optional 2x 2x3.5inch hard drive modules or 2x 2x2.5inch hard drive modules	Front 25x hot-swap 2.5 inch SAS/SATA hard drives; Rear optional 2x 2x3.5inch hard drive modules or 2x 2x2.5inch hard drive modules
External port	Front port: 1 VGA, 2 USB3.0 Rear: 1 VGA, 1 COM port, 2USB3.0, 1 RJ45 Gigabit management network port, 2 Gigabit RJ45 network ports		
PCI Expansion form	6X PCIe full-height slots, 4X PCIe half-height slots, 1X OCP 3.0 slot		
PCIe expansion specification	Riser1: 1Xfull-height PCIe 4.0 x16, 2Xfull-height PCIe 4.0 x8 2Xfull-height PCIe 4.0 x16 Riser2: 1Xfull-height PCIe 4.0 x16, 2Xfull-height PCIe 4.0 x8 2Xfull-height PCIe 4.0 x16 Riser3: 1Xhalf-height PCIe 4.0 x16 1Xhalf-height PCIe 3.0 x8, 1Xhalf-height PCIe 3.0 x8 (in x16 Slot) Riser4: 1Xhalf-height PCIe 3.0 x8, 1Xhalf-height PCIe 3.0 x8 (in x16 Slot) OCP: 1XOCP 3.0 (PCIe 3.0 x8)		
Safety	TPM/TCM (optional)		
Power supply	AC 220V 550W, 800W, 1300W, 1600W, 2000W, 2200W redundant power supply (adapted according to the actual power requirement)		
Fan	Standard 4X 8038 hot-swap N+1 redundant fans, optional 8056 hot-swap N+1 redundant fans		
IPMI	IPMI 2.0		
Operating Temperature	Temperature: 5°C~35°C/ Humidity: 20%~80%RH non-condensing		

Product partcode	IQ-S4314S8	2U Silver 16-Core 08-Bay Single CPU Server
	IQ-SS4314S12	2U Silver 16-Core 12-Bay Single CPU Server
	IQ-SS4314S25	2U Silver 16-Core 25-Bay Single CPU Server