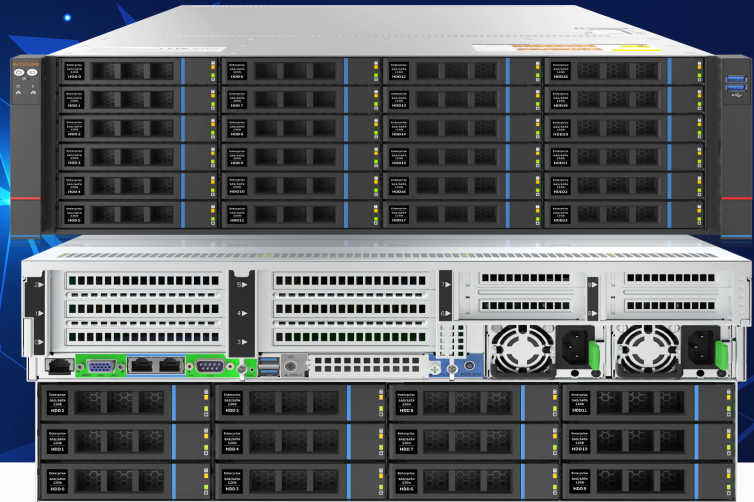


# High-End Intel Purley/ Whitley Servers/Storages for rigorous Surveillance & Analytics applications

INTELOQ



## General Specs:

- Platform: Intel Purley/ Whitley 4U36-Bay rack mountable server
- CPU: Intel Xeon Bronze/Silver 3204/4208/4310 processors, 6/8/12-Core
- Riser card: PCIe3.0x24 /4.0x32
- Power: 1200W CRPS x2 or as per requirement
- Rail: chassis slide rail kits x1
- RAID card: 1G/2G/4G /PCIe 3.0 x8 RAID 0,1,5,6,10,50,60 x1
- Default NIC card: 1Gb/2ports/RJ45
- RAM: Option
- Extra NIC: Option
- OS: Option
- \* support 12Gb/s 4port 2.5" or 3.5" SAS/SATA HDD backplane w/cables
- \* w/2x GbE and 1x IPMI Management LAN
- \* supports 24/32x DDR4 RDIMM slots

High-End Server: The Intel Purley Server Platform includes Intel® PCH C621/ C621 A series and supports the 1st or 2nd /Gen3 generation Intel® Xeon® Scalable series processors to bring about servers storages that deliver new levels of breakthrough performance. Supports 1 or 2 Gen3 Intel® Xeon® Scalable ICE Lake processor 24/ 32 DDR4 slots, supports 2666/2933/3200MHz DDR4 memory / Supports 36 hot-swap SAS/SATA (HDD/SSD)

# Product Capabilities

Model series	IQ-SS0636B	IQ-SS0836S	IQ-SS1236S
Model type	4U, 6-Core 36-bays	4U, 8-Core 36-bays	4U, 12-Core 36-bays
Dimensions	748x433.4x43.6mm (DxWxH)	748x433.4x87.6mm (DxWxH)	
Processor	Intel Xeon Bronze 3204 6C	Intel Xeon Silver 4208 8C	Intel Xeon Silver 4310 12C
Memory	24 DDR4 memory slots, support DDR4 LRDIMM/RDIMM 2666/2933/3200MHz		32 DDR4 memory support DDR4
Internal storage interface	Two NVMe PCIe 3.0 x4 M.2 ports, two SATA 7PIN slots (supporting SATA DOM), and three MiniSAS HD ports		2 PCIe 4.0 x4 M.2 ports, 2 SATA 7PIN slots (support SATA DOM), 3 MiniSAS HD ports
External hard drive	Front port: 36* 3.5/2.5" SAS/SATA hot-swap hard drives Optional 4x 3.5" SAS/SATA or 4x 2.5" SAS/SATA/U.2 hard drives		
External port	Front port: 36* 3.5/2.5" SAS/SATA hot-swap hard drives Optional 4x 3.5" SAS/SATA or 4x 2.5" SAS/SATA/U.2 hard drives		
PCIe expansion form	Up to 2x PCIe full-height, single-width, half-length slots, 1x OCP 3.0 slot	6x PCIe full-height slots, 4x PCIe half-height slots, 1x OCP 3.0 slot	
PCIe expansion specification	Riser1: 3x full-height PCIe 3.0 x8 or 1x full-height PCIe 3.0 x16, 1* full-height PCIe 3.0 x8 Riser2: 3x full-height PCIe 3.0 x8 or 1x full-height PCIe 3.0 x16, 1* full-height PCIe 3.0 x8 Riser3: 1x half-height PCIe 3.0 x8, 1x half-height PCIe 3.0 x8 (in x16 Slot) or 1x half-height PCIe 3.0 x16 Riser4: 1x half-height PCIe 3.0 x8, 1x half-height PCIe 3.0 x8 (in x16 Slot) or 1x half-height PCIe 3.0 x16 OCP: 1x OCP 3.0 (PCIe 3.0 x8)	Riser1: full-height 1x PCIe 4.0 x16, 2x PCIe 4.0 x8 or 2x PCIe 4.0 x16 Riser2: full-height 1x PCIe 4.0 x16, 2x PCIe 4.0 x8 or 2x PCIe 4.0 x16 Riser3: half-height 1x PCIe 4.0 x16 or 1x PCIe 3.0 x8, 1x PCIe 3.0 x8 (in x16 Slot) Riser4: half-height 1x PCIe 3.0 x8, 1x PCIe 3.0 x8 (in x16 Slot) OCP: 1x OCP 3.0 (PCIe 3.0 x8)	
Safety	TPM/TCM (optional) Chassis open intrusion detection; Locked upper cover of chassis		
Power supply	AC 220V 550W, 800W, 1300W, 1600W, 2000W, 2200W redundant power supply (adapted according to the actual power requirement)		
Fan	8x 8038 N+1 Redundant hot-swap fans		
IPMI	IPMI 2.0		
Management port	Onboard iBMC management module supports management features such as IPMI, SOL, KVM Over IP, and virtual media		
Dimensions	798 x 433.4 x 176.5mm (D x W x H)		
Operating temperature & humidity	Operating temperature: 5°C - 35°C (indoor) Storage temperature: -40°C - 70°C		
Storage temperature & humidity	Short-term storage ( $\leq 72\text{H}$ ): temperature -40°C ~ 70°C/ humidity 20%~90%RH non-condensing (including packaging) Long-term storage ( $> 72\text{H}$ ): temperature 20°C ~ 28°C/ humidity 30%~70%RH non-condensing (including packaging)		

Product partcode	<b>IQ-SS0636B</b>	4U Bronze 6-Core 36-Bay Server/Storage
	<b>IQ-SS0836S</b>	4U Silver 8-Core 36-Bay Server/Storage
	<b>IQ-SS1236S</b>	4U Silver 12-Core 36-Bay Server/Storage